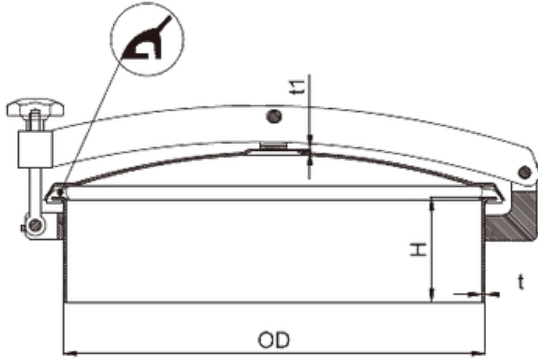


MANHOLE COVER





non pressure manhole cover



non pressure manhole cover

SIZE	OD	H	t	t1	PRES (Bar)
150	155	100	3	2	0-0.1
200	200	100	2.2	1.7	0-0.1
250	250	100	2.5	2	0-0.1
300	300	100	2.5	2	0-0.1
350	350	100	2.8	2	0-0.1
400	400	100	2.5	2	0-0.1
450	450	105	2.7	3	0-0.1
500	500	100	3	2.5	0-0.1
600	600	100	3	2.5	0-0.1



Pharmaceutical manufacturing



Food processing



New energy



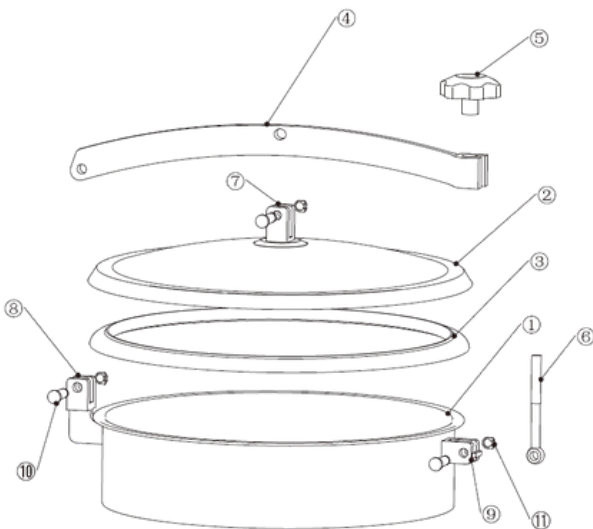
Biological fermentation



Chemical industry



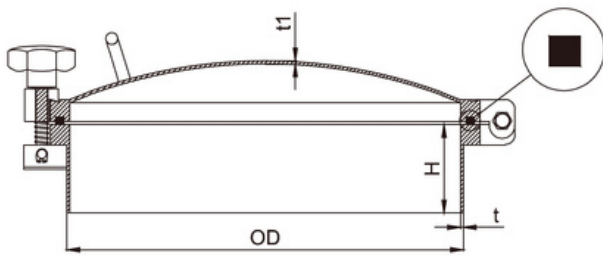
Environmental protection industry



NO	Description	Material	Quantity
1	Lower ring	304/316L	1
2	Lid	304/316L	1
3	Sealing ring	SILICA GEL	1
4	Layering	304/316L	1
5	Hand wheel	304/ABS	1
6	Loose bolt	304	1
7	Upper hinge bracket	304	1
8	Rear hinge bracket	304	1
9	Front hinge bracket	304	1
10	Cross pin	304	1
11	Clasp	304	1



pressure manhole cover



pressure manhole cover

SIZE	OD	H	t	t1	PRES (Bar)	PRES (Bar)
150	156	100	3	2.5	4	1-3
200	206	100	3	2.5	4	1-3
250	256	100	3	2.5	4	1-3
300	306	100	3	2.5	4	1-3
350	356	100	3	2.5	5	1-3
400	406	100	3	2.5	6	1-3
450	456	100	3	3	6	1-3
500	506	100	3	3	6	1-3
600	606	100	3	3	8	1-3

MATERIAL: STAINLESS STEEL SUS304, 316L
 PRESSURE RANGE: 0.1-0.6MPA
 SURFACE TREATMENT: MIRROR FINISH OR BRUSHED
 FEATURES: IT BELONGS TO QUICK-OPENING PRESSURE MANHOLE, THE PRODUCT DESIGN IS BEAUTIFUL AND PRACTICAL
 APPLICATION: FOOD CANS, PHARMACEUTICAL CANS, CHEMICAL CANS, AND OTHER EQUIPMENT FIELDS
 COMMON SPECIFICATIONS: DN150-600MM



Pharmaceutical manufacturing



Food processing



New energy



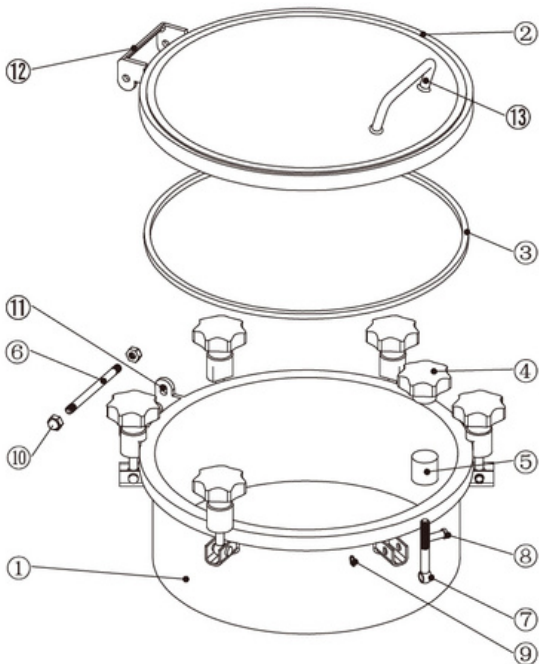
Biological fermentation



Chemical industry



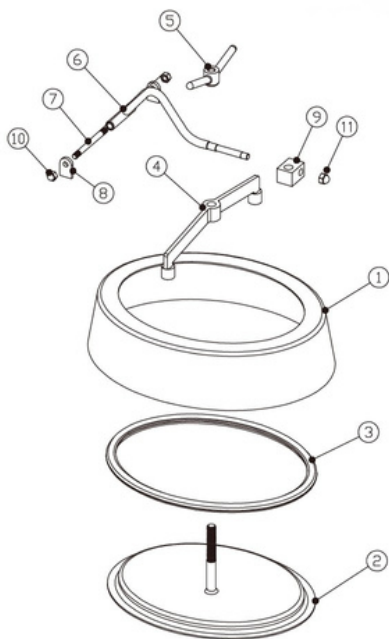
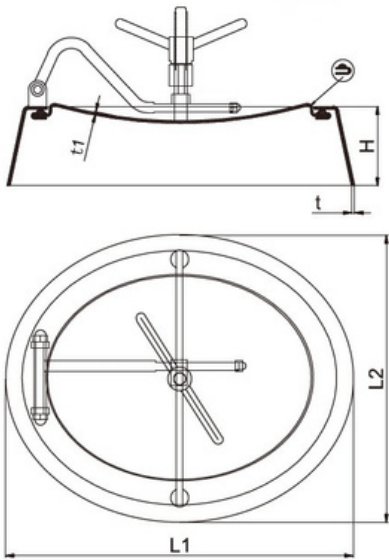
Environmental protection industry



NO	Description	Material	Quantity
1	Lower ring	304/316L	1
2	Lid	304/316L	1
3	Sealing ring	SILICA GEL	1
4	Hand wheel	304/ABS/RING	4-8
5	Link	304	1
6	Outer hexagon bolt	304	1
7	Loose bolt	304	4-8
8	Cross pin	304	4-8
9	Clasp	304	4-8
10	Nut	304	1
11	Lower hinge	304	1
12	Upper hinge	304	1
13	Haft	304	1



Oval Manhole Cover (Opening Outward)



Oval Manhole Cover (Opening Outward)

SIZE	L1	L2	H	t	t1	Pres (Bar)
550*450	550	450	80	5	4	1-3
550*450A	550	450	80	4	4	1-3
565*465	565	465	100	5	4	1-3
580*480	580	480	133	5	4	1-3

PRODUCT FEATURES: COMPARED WITH ORDINARY INNER MANHOLE, THIS MANHOLE IS EASY TO CLEAN, NOT EASY TO LEAVE RESIDUE, SUITABLE FOR FOOD, PHARMACEUTICAL AND OTHER HIGH CLEAN EQUIPMENT, ENSURE THE MATERIAL, CAN PROVIDE QUALITY INSPECTION REPORT.

PRESSURE RANGE: LESS THAN OR EQUAL TO 0-0.4MPA

WORKING PRESSURE

PRODUCT MATERIAL: 304, 316L

PRODUCT APPEARANCE: INTERNAL AND EXTERNAL MIRROR, OR INTERNAL MIRROR EXTERNAL MATTE

APPLICATION: FOOD CANS, BEER CANS AND OTHER EQUIPMENT INDISPENSABLE ACCESSORIES



Food processing



Chemical industry



Pharmaceutical manufacturing



New energy



Biological fermentation

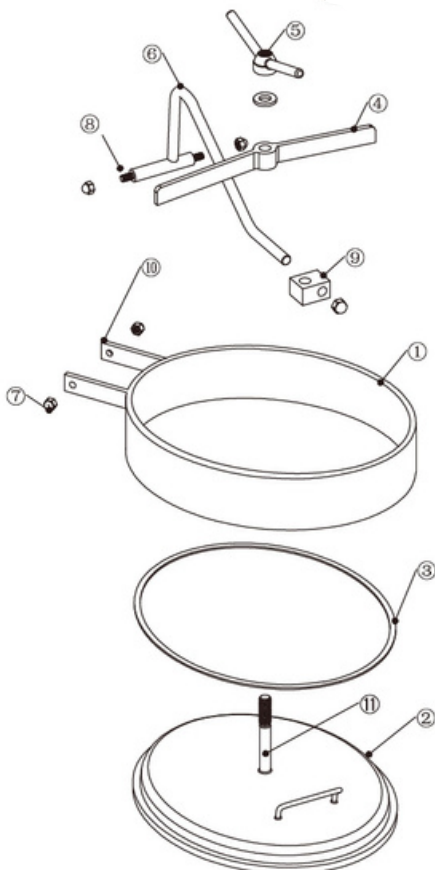
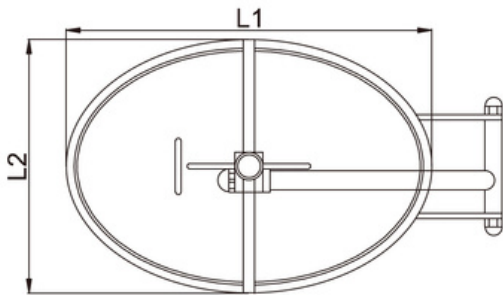
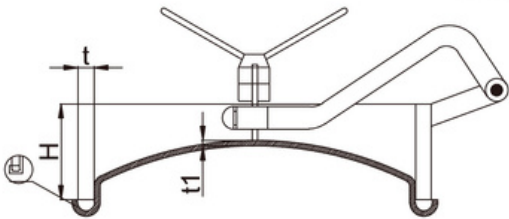


Environmental protection industry

NO	Description	Material	Quantity
1	Lower ring	304/316L	1
2	Lid	304/316L	1
3	Sealing ring	SILICA GEL	1
4	Layering	304	1
5	A claw hand wheel	304	1
6	Suspension arm	304	1
7	Double headed screw	304	1
8	Support lug	304	1
9	Block	304 / ABS	1
10	Release nut	304	1
11	Cap type nuts	304	1



Oval Manhole Cover (Opening Inward)



Oval Manhole Cover (Opening Inward)

SIZE	L1	L2	H	t	t1
430*330	430	330	80	8	2.5
450*350	450	350	80	8	2.5
530*430	530	430	80	8	3
530*430	530	430	80	10	3
635*525	635	525	80	10	3

PRODUCT FEATURES: COMPARED WITH ORDINARY INNER MANHOLE, THIS MANHOLE IS EASY TO CLEAN, NOT EASY TO LEAVE RESIDUE, SUITABLE FOR FOOD, PHARMACEUTICAL AND OTHER HIGH CLEAN EQUIPMENT, ENSURE THE MATERIAL, CAN PROVIDE QUALITY INSPECTION REPORT.

PRESSURE RANGE: LESS THAN OR EQUAL TO 0-0.4MPA

WORKING PRESSURE

PRODUCT MATERIAL: 304, 316L

PRODUCT APPEARANCE: INTERNAL AND EXTERNAL MIRROR, OR INTERNAL MIRROR EXTERNAL MATTE

APPLICATION: FOOD CANS, BEER CANS AND OTHER EQUIPMENT INDISPENSABLE ACCESSORIES



Food processing



Chemical industry



Pharmaceutical manufacturing



New energy



Biological fermentation



Environmental protection industry

NO	Description	Material	Quantity
1	Lower ring	304/316L	1
2	Lid	304/316L	1
3	Sealing ring	SILICA GEL	1
4	Layering	304	1
5	A claw hand wheel	304	1
6	Suspension arm	304	1
7	Outer hex nuts	304	1
8	Double headed screw	304	1
9	Block	304 / ABS	1
10	Support lug	304	2
11	Screw	304	1

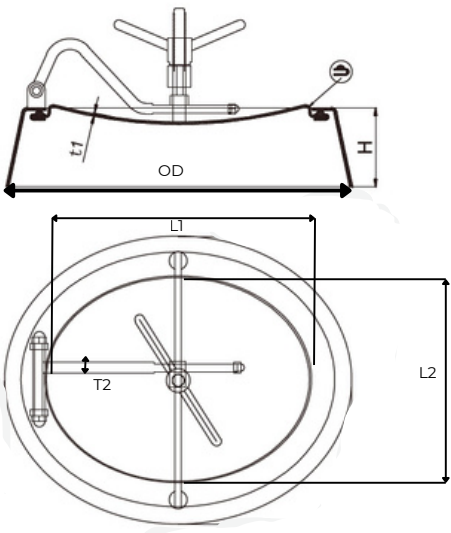


Oval Manhole Cover (Opening Outward)



Oval Manhole Cover (Opening Outward)

SIZE	OD	H	t1	T2	PRES (Bar)	L1	L2
535 X 435	535 X 435	123	4	18	0-0.1	440	340



Pharmaceutical manufacturing



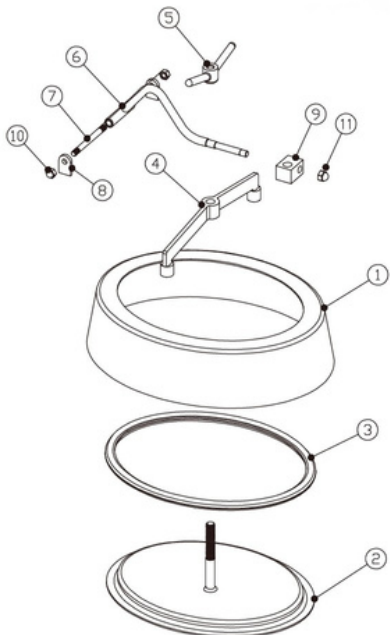
New energy



Biological fermentation



Environmental protection industry



NO	Description	Material	Quantity
1	Lower ring	304/316L	1
2	Lid	304/316L	1
3	Sealing ring	SILICA GEL	1
4	Layering	304	1
5	A claw hand wheel	304	1
6	Suspension arm	304	1
7	Double headed screw	304	1
8	Support lug	304	1
9	Block	304 / ABS	1
10	Release nut	304	1
11	Cap type nuts	304	1

